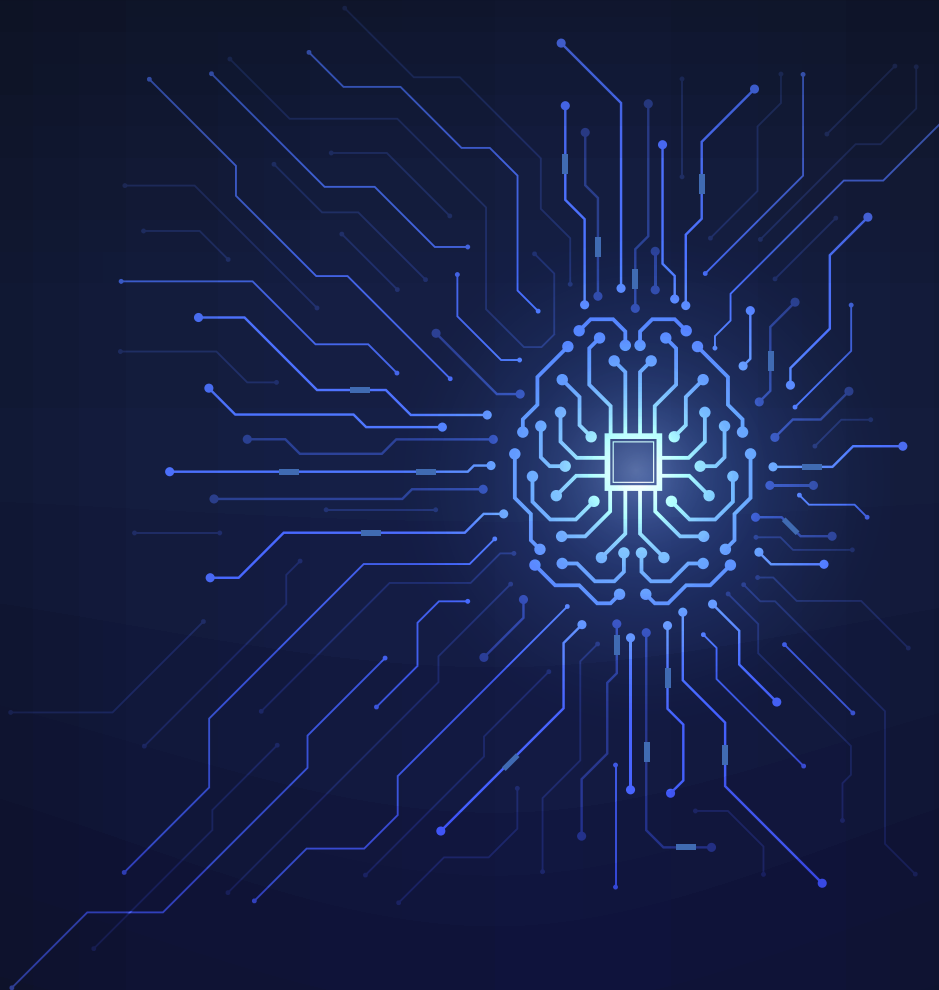


# GridLynk Meter Data Management System

GridLynk MDM: Master Your Meter Data,  
Empower Your Decisions



SOFTWARE



Effective meter data management is crucial for utilities to efficiently handle the vast volumes of data generated by smart meters.

GridLynk MDM provides a comprehensive solution designed to streamline and enhance data management processes.

The system ensures accurate billing and revenue collection, enables detailed monitoring and analysis of energy consumption patterns, and improves operational efficiency through automated processes. Additionally, GridLynk MDM enhances customer service by delivering timely and precise information, ultimately driving both operational excellence and customer satisfaction.



## GridLynk MDM Mobile App Key Features

<b>Offline Field Operations:</b>	A mobile/handheld-based tool designed for Storm-compatible field operations, enabling efficient work even when remote communications are unavailable.
<b>Cross-Platform Compatibility:</b>	Compatible with both iOS and Android devices, providing flexibility in device choice for field staff.
<b>Bluetooth Connectivity:</b>	Connects to meters via Bluetooth low energy, ensuring seamless and efficient communication.
<b>Remote Operations:</b>	Supports Storm-compatible field operations for meter installations and site management, even in areas with limited connectivity.
<b>Enhanced Security:</b>	Eliminates the need for field staff to handle meter security keys, enhancing security and reducing the risk of key mismanagement.
<b>AD Authentication:</b>	Utilizes Active Directory (AD) authentication for installers, reducing the distribution of meter usernames and passwords, and enhancing utility control.
<b>Centralized Account Management:</b>	Allows for central control and management of accounts, enabling activation and deactivation as required for better oversight and security.
<b>Continuous Data Sync:</b>	Synchronizes data and conversations with Storm when cellular reception is available, ensuring up-to-date information.



### Automated Data Collection

- Smart meters automate consumption data collection, reducing errors and streamlining the process.



### Data Integration

- MDM systems consolidate smart meter data for simplified management and analysis, enhancing utility access.



### Billing Efficiency

- Smart meters provide real-time consumption data, enabling prompt and accurate billing, eliminating estimated bills.



### Remote Meter Reading

- Remote smart meter management reduces field visits, streamlining maintenance and improving customer response.



### Enhanced Data Analysis

- MDM systems enable advanced analytics, offering insights into consumption patterns and facilitating data-driven decision-making.

# Ultimate Flexibility

<b>Accurate Data Collection</b>	<ul style="list-style-type: none"><li>• Seamless integration with various smart meter technologies.</li><li>• Reliable data retrieval and aggregation from multiple sources.</li></ul>
<b>Advanced-Data Analytics</b>	<ul style="list-style-type: none"><li>• In-depth analysis of energy consumption patterns and trends.</li><li>• Real-time data processing and reporting for operational insights.</li></ul>
<b>Automated Billing</b>	<ul style="list-style-type: none"><li>• Precise billing calculations based on actual meter readings.</li><li>• Integration with billing systems for seamless revenue management.</li></ul>
<b>Operational Efficiency</b>	<ul style="list-style-type: none"><li>• Automated data processing to reduce manual intervention.</li><li>• Streamlined workflows for meter data handling and management</li></ul>
<b>Customer Engagement</b>	<ul style="list-style-type: none"><li>• Timely and accurate information for improved customer service.</li><li>• User-friendly interfaces for customer interaction and support.</li></ul>
<b>Demand Response and Load Management</b>	<ul style="list-style-type: none"><li>• Tools for monitoring and managing peak demand.</li><li>• Support for demand response programs and load control strategies.</li></ul>
<b>Data Security and Integrity</b>	<ul style="list-style-type: none"><li>• Robust security protocols to protect data from unauthorized access.</li><li>• Ensured data accuracy and integrity with built-in validation checks.</li></ul>
<b>Regulatory Compliance</b>	<ul style="list-style-type: none"><li>• Adherence to industry standards and regulations.</li><li>• Reporting features to support compliance and audits.</li></ul>
<b>Scalability and Flexibility</b>	<ul style="list-style-type: none"><li>• Scalable architecture to accommodate growing data volumes.</li><li>• Flexible configuration options to adapt to different utility needs.</li></ul>
<b>Integration Capabilities</b>	<ul style="list-style-type: none"><li>• Seamless integration with existing utility IT systems.</li><li>• Support for various communication protocols and data formats.</li></ul>
<b>Real-Time Monitoring and Alerts</b>	<ul style="list-style-type: none"><li>• Real-time monitoring of meter data for immediate issue detection.</li><li>• Automated alerts and notifications for anomalies and critical events.</li></ul>
<b>User-Friendly Interface</b>	<ul style="list-style-type: none"><li>• Intuitive dashboards and reports for easy data interpretation.</li><li>• Customizable views and settings to match user requirements.</li></ul>
<b>Disaster Recovery and Backup</b>	<ul style="list-style-type: none"><li>• Built-in disaster recovery solutions to ensure data availability.</li><li>• Regular data backups to safeguard against data loss.</li></ul>
<b>Customizable Reporting</b>	<ul style="list-style-type: none"><li>• Comprehensive reporting tools for detailed insights and analysis.</li><li>• Custom report generation to meet specific utility needs.</li></ul>
<b>Multi-Utility Support</b>	<ul style="list-style-type: none"><li>• Capability to manage data from multiple types of utilities (e.g., electricity, water, gas).</li><li>• Consolidated view for integrated utility management.</li></ul>
<b>Easy to Use</b>	<ul style="list-style-type: none"><li>• Automatic meter commissioning</li><li>• Single Sign-On (integrated with the client's corporate Active Directory)</li><li>• Fully compliant with advanced distributor load control requirements</li><li>• Native support for AMI demand response</li><li>• Browser-based user interface</li><li>• Real-time meter diagnostics</li><li>• Object-based meter configuration through "Business Services"</li></ul>
<b>Easy to Integrate</b>	<ul style="list-style-type: none"><li>• Client-controlled user authentication (through Microsoft Active Directory &amp; ADFS)</li><li>• Easy back-office systems integration through web-centric APIs and data formats (REST &amp; JSON)</li><li>• Option for "Guaranteed Data Delivery"</li></ul>

# Ultimate Flexibility

## Integrated Field Controller for Windows

- Support for online and offline field operations

## Independent Security

- Native support for data integrity

## Utilities should consider using GridLynk MDM for the following compelling reasons:

<b>Enhanced Data Accuracy:</b>	GridLynk MDM ensures precise and reliable data collection from smart meters, minimizing billing errors and improving revenue integrity. precise and reliable data collection from smart meters, minimizing billing errors and improving revenue integrity.
<b>Operational Efficiency:</b>	The system automates data processing and reporting, reducing manual intervention and streamlining workflows, which enhances overall operational efficiency.
<b>Advanced Analytics:</b>	Utilities benefit from in-depth analytics and reporting capabilities, enabling them to understand consumption patterns, optimize resource allocation, and make informed decisions.
<b>Improved Customer Service:</b>	With accurate and timely information, GridLynk MDM enhances customer engagement and support, leading to improved satisfaction and trust.
<b>Scalability and Flexibility:</b>	The solution is designed to grow with the utility's needs, accommodating increasing data volumes and adapting to evolving requirements.
<b>Demand Response and Load Management:</b>	GridLynk MDM supports effective demand response programs and load management strategies, helping utilities manage peak loads and improve grid stability.
<b>Robust Security:</b>	The system incorporates advanced security measures to protect sensitive data and ensure compliance with industry standards, safeguarding against unauthorized access and data breaches.
<b>Seamless Integration:</b>	GridLynk MDM integrates effortlessly with existing IT infrastructure and various communication protocols, facilitating smooth deployment and operational continuity.
<b>Regulatory Compliance:</b>	The system supports adherence to regulatory requirements and industry standards, aiding in audits and reporting.
<b>Disaster Recovery and Backup:</b>	Built-in disaster recovery and regular data backups ensure data availability and continuity in case of unforeseen events.

### EDMP

PO Box 125428, Plot No. MO0147C, Junction of N400 & N406 Streets,  
Jebel Ali Free Zone, Dubai, United Arab Emirates  
info@edmpco.com www.edmpco.com