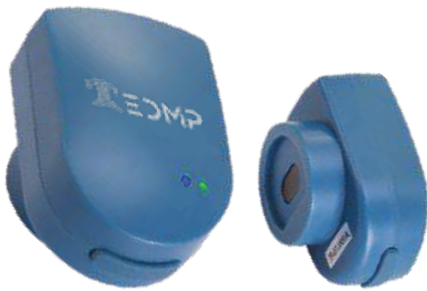


OptiLink (Bluetooth)

Bluetooth Low Energy Optical Probe for Data Communication



The EDMP **OptiLink (Bluetooth)** is a dual-purpose communication probe designed for secure and efficient interaction with EDMP smart meters. It supports both Classic Bluetooth and BLE low-power modes, allowing wireless pairing with PCs, laptops, and handheld devices, while also functioning as a USB optical head when connected via charging cable.

Fully compliant with IEC 62056-21 and supporting DLMS protocols, it enables meter reading, programming, and diagnostics at data rates up to 57,600 bps. Powered by a rechargeable 800 mAh battery with up to 100 hours of operation, the probe features LED indicators for power, communication, charging and BLE status, ensuring reliability and ease of use in field applications

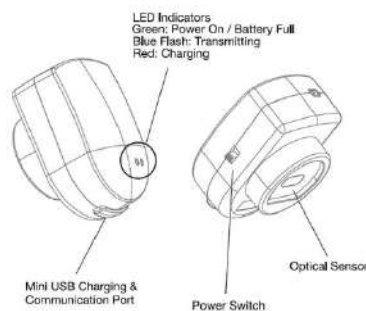


OptiLink (Bluetooth)

Technical Specifications

Design	<ul style="list-style-type: none">Dual-purpose: Bluetooth communication + USB optical head (via charging cable)
Standards Compliance	<ul style="list-style-type: none">IEC 62056-21 compliant; Supports DLMS for data and parameter reading/writing; ANSI, DL/T-645 protocols, Fitting global meter standards
Bluetooth Versions	<ul style="list-style-type: none">Bluetooth 2.1 to 5.4 dual-mode (Classic & BLE low-power)
Battery	<ul style="list-style-type: none">Capacity: 800/1000 mAhCharging Time: 30mins 2C PD Fast Charge
Communication	<ul style="list-style-type: none">Port: Type C- USB 3.0/ OTGDuration: Max 100 hoursInterface: BLE and SPP dual-mode
Sensor Light Wavelength	<ul style="list-style-type: none">~900 nm
Communication Rate (Max)	<ul style="list-style-type: none">57600 in normal and max.115200 available
Maximum Frame Length	<ul style="list-style-type: none">512 bytes
Communication Mode	<ul style="list-style-type: none">Transparent: IEC 62056-21 Mode C / Mode E /User Mode, ANSI C12.18 / ANSI C12.18-2006 type2Smart: IEC 62056-21 Mode C / Mode E
Duration of Communication	<ul style="list-style-type: none">Max 100 hours
Battery Life	<ul style="list-style-type: none">Up to 20 hours of continuous operation (fully charged)
Communication Distance	<ul style="list-style-type: none">Up to 10 meters
Auto Power Off	<ul style="list-style-type: none">Default auto power off after 5 mins (Configurable)
Indicators	<ul style="list-style-type: none">Power LEDCommunication LEDCharging LEDBLE LED
Operating Temperature	<ul style="list-style-type: none">-40°C to +70°C
Protection Class	<ul style="list-style-type: none">IP65
Dimensions & Weight	<ul style="list-style-type: none">Dimensions: 31.5 mm Diameter / 33.5 mm Height; Weight: 65gr

Design



EDMP

PO Box 125428, Plot No. MO0147C, Junction of N400 & N406 Streets,
Jebel Ali Free Zone, Dubai, United Arab Emirates

✉ info@edmpco.com 🌐 www.edmpco.com

Copyright © 2026 EDMP Limited. All Rights Reserved. All trademarks are the property of their respective holders. EDMP's Policy is one of continuous product development and the right is reserved to modify specifications contained herein without notice.